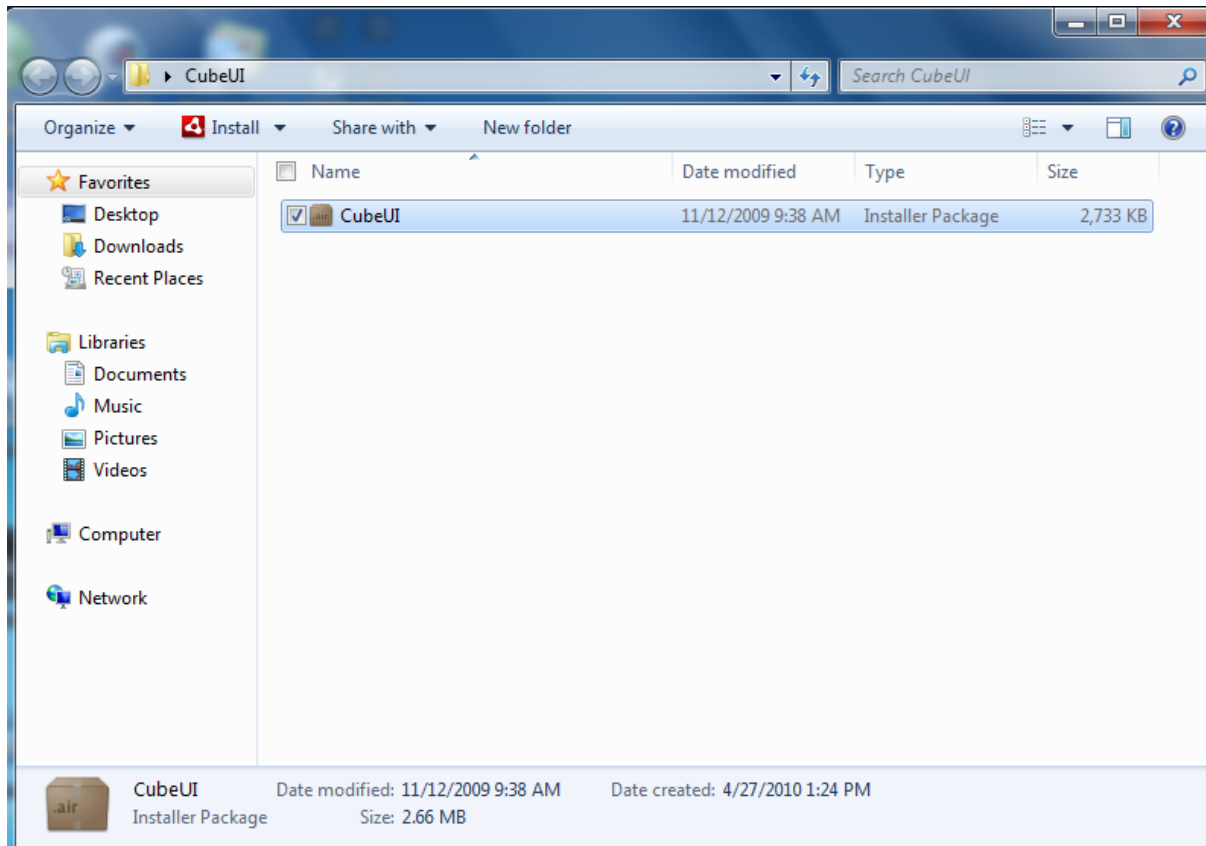


Viliv Shuffle (Windows 7)

ShuffleUI needs to be installed under Win7.

Attention : Below manual originally was created for S5 and X70EX where the “ShuffleUI” program is named “CubeUI”. But the installation steps are the same. In addition you will need to upgrade firmware with “EC_S7_4410.exe”

With a double click you can start the installation.



A small black window will open.

Click on „Install“ --> „Continue“ --> „I Agree“

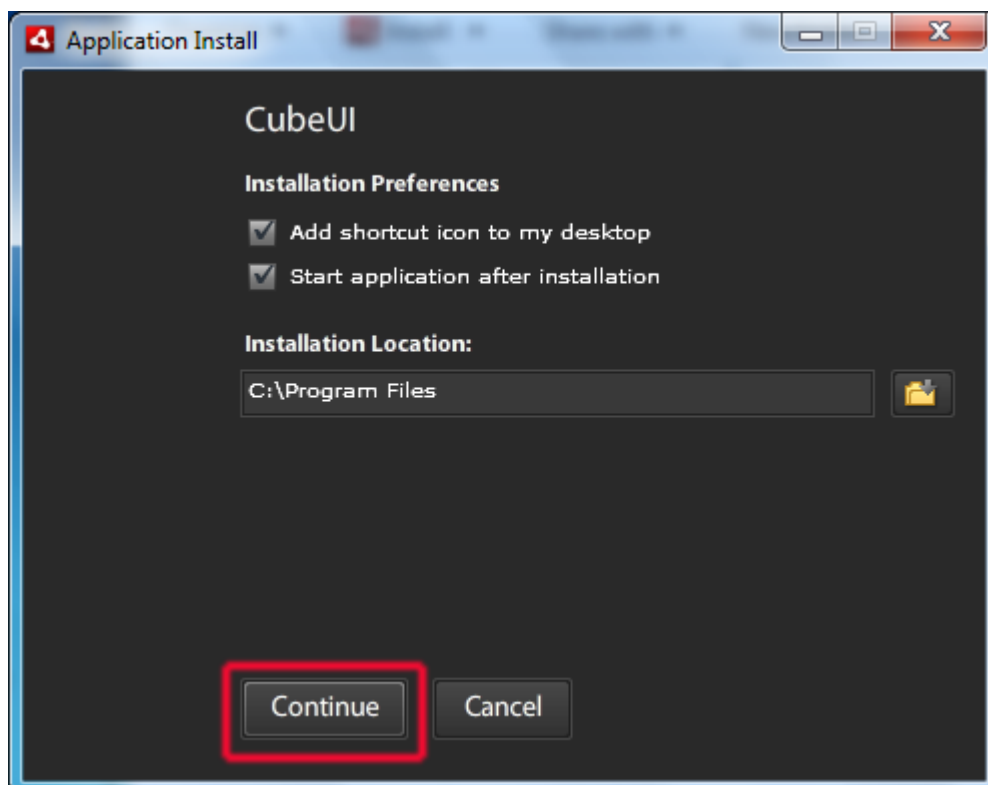
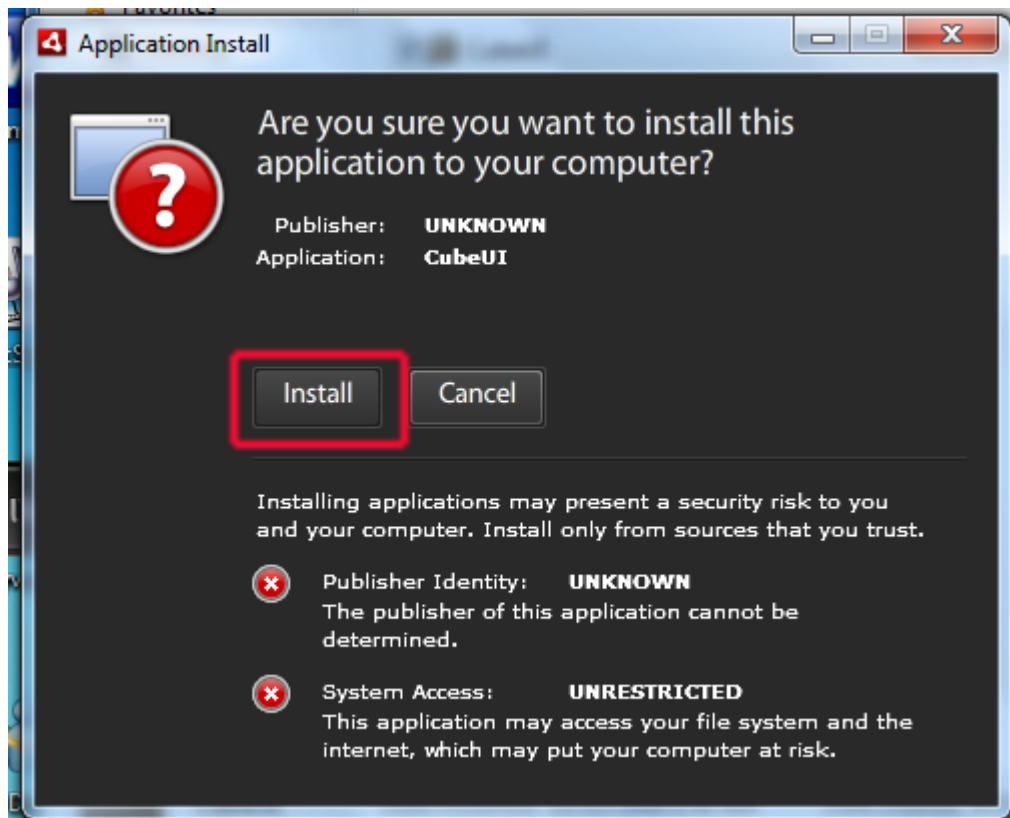
Installation needs approx. 1 minute and the window will close automatically when finished.



CARTFT.COM

Shop for mobile
PC- and GPS-Solutions

Power Up Your Car

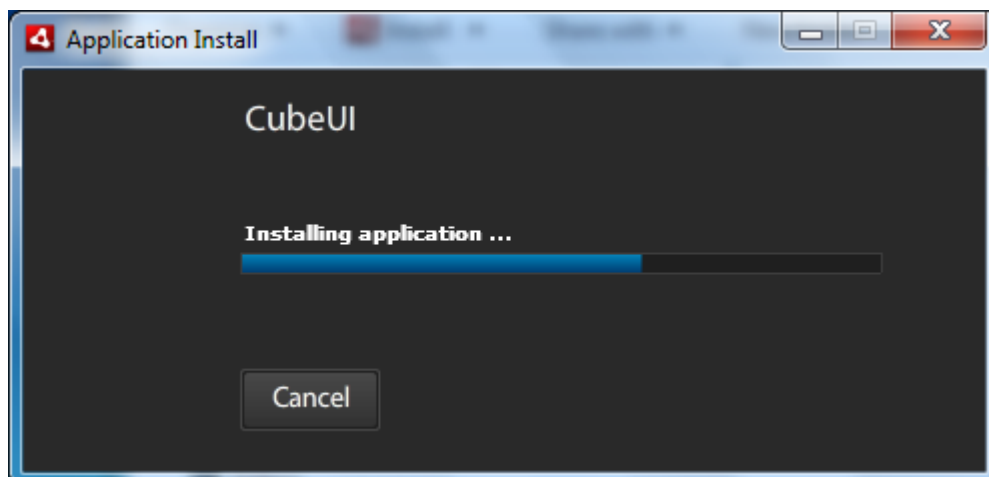
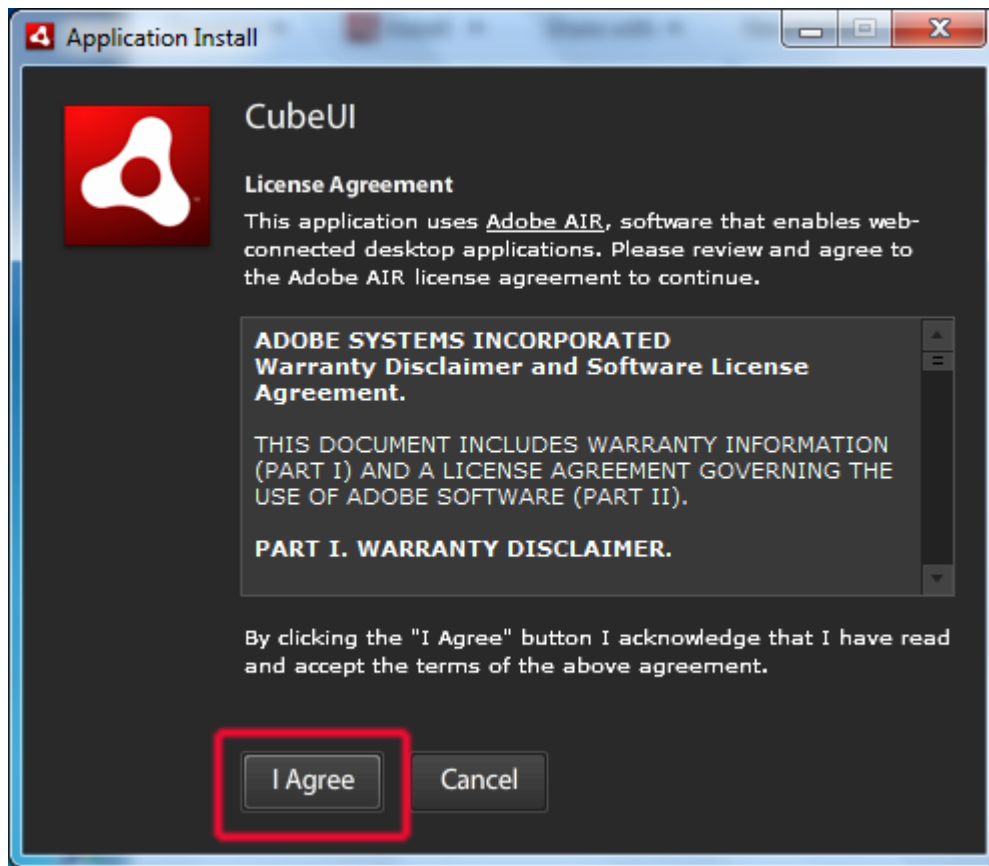




CARTFT.COM

Shop for mobile
PC- and GPS-Solutions

Power Up Your Car



If you want Cube to be started automatically upon Windows startup :

Double-click on desktop shortcut „Viliv Manager“

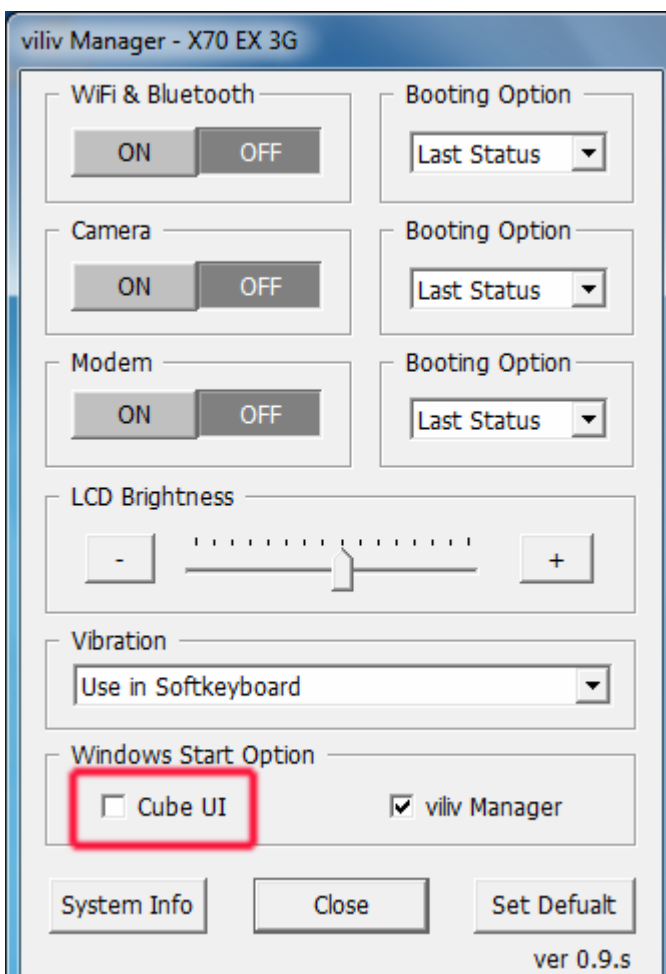


CARTFT.COM
Shop for mobile
PC- and GPS-Solutions

Power Up Your Car



In „Viliv Manager“ check the option for Cube UI.

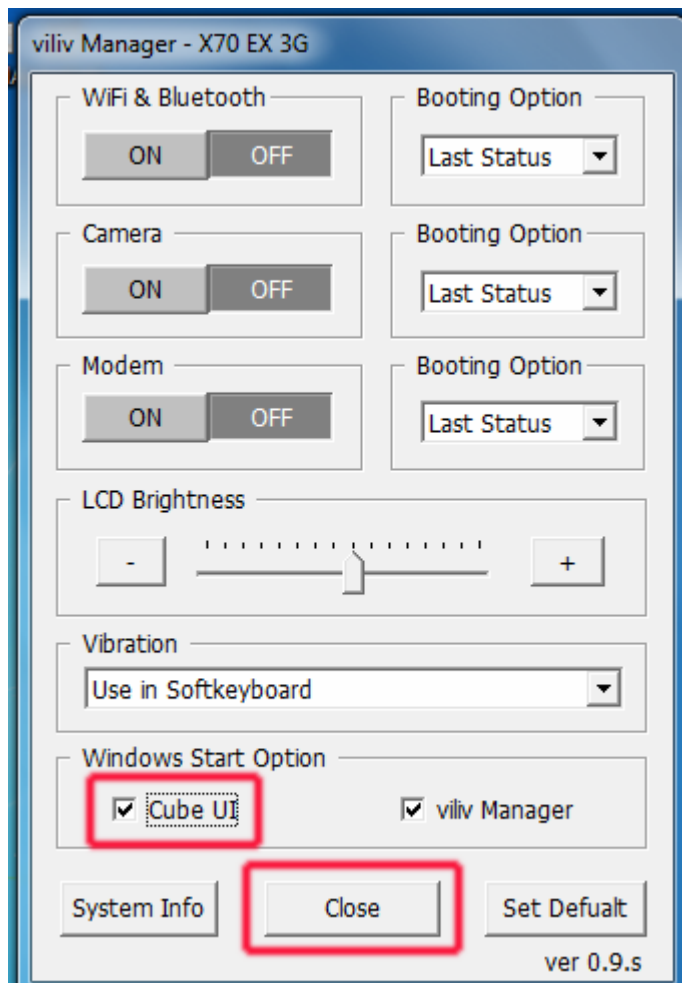


Close the window and restart the system.

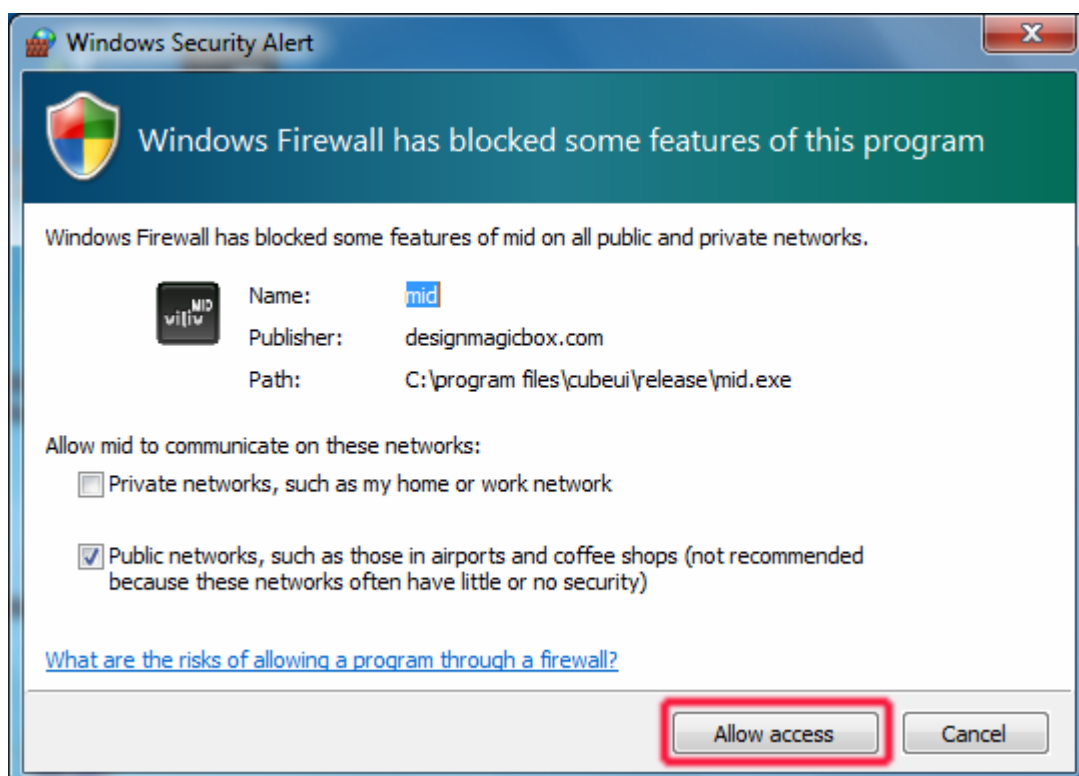


CARTFT.COM
Shop for mobile
PC- and GPS-Solutions

Power Up Your Car



After booting you need to confirm this message :



Now you can use the Cube utility.



The new shortcut on desktop called „MID“ will open it also.

